



CSS124P Series SMD WIRE WOUND POWER INDUCTORS (SHIELDED)

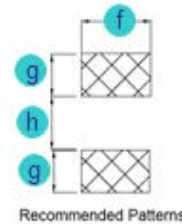
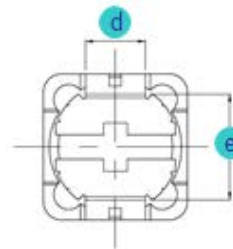
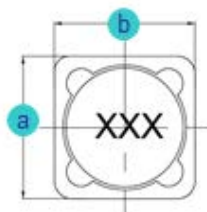
Rev. A

A. Electrical Specifications:

P/N	Marking	Inductance (μH)	Test Freq. (KHz)	DCR Max. ($\text{m}\Omega$)	Rated Current (A)
CSS124P-3R9M	3R9	3.9	100	15	6.50
CSS124P-4R7M	4R7	4.7	100	18	5.70
CSS124P-6R8M	6R8	6.8	100	23	4.90
CSS124P-8R2M	8R2	8.2	100	26	4.60
CSS124P-100M	100	10	100	28	4.50
CSS124P-120M	120	12	100	38	4.00
CSS124P-150M	150	15	100	50	3.20
CSS124P-180M	180	18	100	57	3.10
CSS124P-220M	220	22	100	66	2.90
CSS124P-270M	270	27	100	80	2.80
CSS124P-330M	330	33	100	97	2.70
CSS124P-390M	390	39	100	132	2.10
CSS124P-470M	470	47	100	150	1.90
CSS124P-560M	560	56	100	190	1.80
CSS124P-680M	680	68	100	220	1.50
CSS124P-820M	820	82	100	260	1.30
CSS124P-101M	101	100	100	308	1.20
CSS124P-121M	121	120	100	380	1.10
CSS124P-151M	151	150	100	530	0.95
CSS124P-181M	181	180	100	620	0.85
CSS124P-221M	221	220	100	700	0.80
CSS124P-271M	271	270	100	870	0.60
CSS124P-331M	331	330	100	990	0.50

B. Dimensions: mm (Inch)

Series	a	b	c	d	e	f	g	h
CSS124P	12.0 (0.472)	12.0 (0.472)	4.8 (0.189)	5.0 (0.197)	8.4 (0.331)	5.4 (0.213)	2.8 (0.110)	7.0 (0.276)
Tol.	± 0.3 (0.012)	± 0.3 (0.012)	Max.	Typ.	Typ.	Typ.	Typ.	Typ.



C. General Information:

- CSS124P-xxx_, "CSS124P" = P/N, "xxx" = Inductance, "_" = Tolerance.
- Tolerance "_": N = $\pm 30\%$, M = $\pm 20\%$, L = $\pm 15\%$.
- Operating temperature range: -30°C to $+100^{\circ}\text{C}$ (Including self-heating).
- Storage temperature: -40°C to $+85^{\circ}\text{C}$.
- Inductance measured using the HP4284A and Chroma1320 & 3302.
- DCR measured using Chroma 16502 milliohm meter.
- Inductance drop no more than 25% of initial value at rated current, temperature rise $\Delta t < 40^{\circ}\text{C}$.
- Inductance and Current range: From $3.9\mu\text{H}$ (6.50A) to $330.0\mu\text{H}$ (0.50A).
- MSL: Level 1.

D. Applications:

- Game Consoles
- Set Top Boxes
- Cables Modems
- Computers
- Mobile Communication Devices (Cell Phones, Radios, etc.)
- PDA, LCD, DVD, BRP, HD.

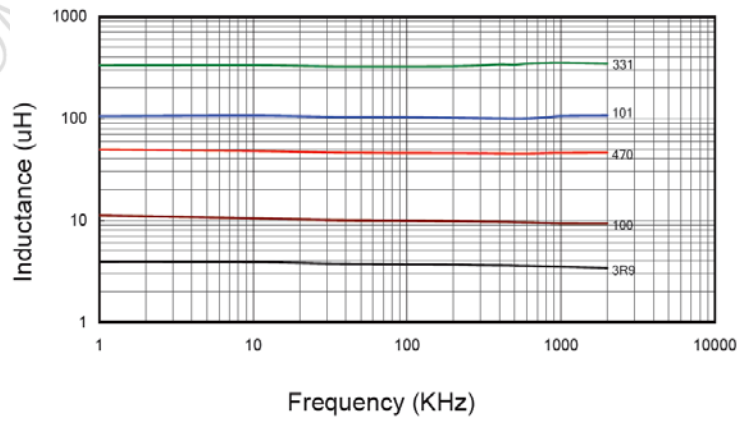


CSS124P Series SMD WIRE WOUND POWER INDUCTORS (SHIELDED)

Rev. A

E. Characteristics Curve:

Inductance vs. Frequency



Inductance vs. DC Current

